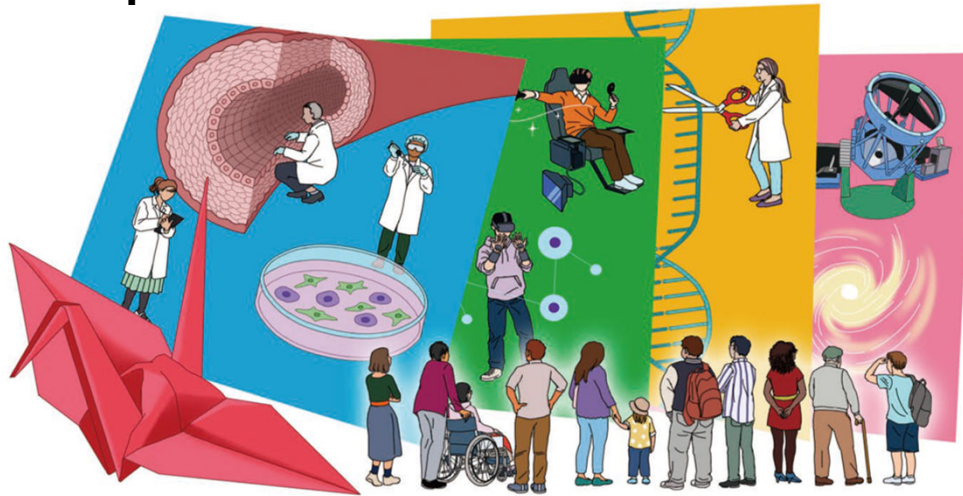


ELSI Workshop



The Science, Ethics, and Regulation of Early Developmental Research

Date and Time

Monday, December 16, 2024
4:30 PM – (maximum duration: 6:30 PM)

Venue

Phoenix International Center MIRAI CREA 1F Hall,
Hiroshima University

Speakers

Tsutomu Sawai

Professor (Special Recognition) (Ethics)
Graduate School of Humanities and Social Sciences,
Hiroshima University



Tomonori Nakamura

Associate Professor (Developmental Biology, Primatology)
Hakubi Center / WPI-ASHBi, Kyoto University



Registration Form

<https://us06web.zoom.us/meeting/register/tZYrduCsqzwiGtC8NbxvT4k-tlWKhNddXRz1>
(Pre-registration required by 12:00 PM, Monday, December 16, 2024)

Hybrid Format

- In-person: 60 participants
- Online: Unlimited participation

Eligibility

Open to faculty, staff, and students
of Hiroshima University



Participation Link

The URL will be sent automatically.

Organized by

Center for Collaborative Sciences,
Hiroshima University

Co-organized by

Uehiro Division for Applied Ethics
The Frontier Development Program for Genome Editing



Contact

Center for Collaborative Sciences,
Hiroshima University
Email: cont-2[at]hiroshima-u.ac.jp